

POWERFULL Bemco®

Travelling Trolley (T/T)



Features and Specifications:

- Wide Range – 0.5T to 50T.
- Simple & Safe load attachment tool.
- Suitable for Straight Beams and curved beam of 1200 mm radius.
- Corrosion resistant components.
- Robust construction- easy to assemble and dismantle.
- Adjustable in width to suit to the I-Beam flange width requirements.
- Evenly distributed load on four wheels for durability and least friction.
- Bent side plates for Wheel Protection from collision at beam ends.
- 2/4- Studs construction for firm and stable movement in rough use.

Geared T/T



- Hob cut geared Trolley Wheels.
- SG iron cast Hand chain wheels.
- Trolleys are suitable for tapered beams and straight beams.
- Designed for moving the trolley by pulling the chain in the downward direction to move the lifted load simultaneously.
- Trolley wheels are CNC machined for accuracy and running on ball bearings to minimize the frictional load—giving minimum effort for the operation.
- Interchangeable Spares.
- Also available with spark resistant features for explosive environments / hazardous area (Zone 1, Temp Class T3, Gas Group IIA, IIB) application.
- Also Available in Stainless Steel Varients.

REDEFINING MATERIAL HANDLING

Push-Pull T/T



Non-Spark T/T

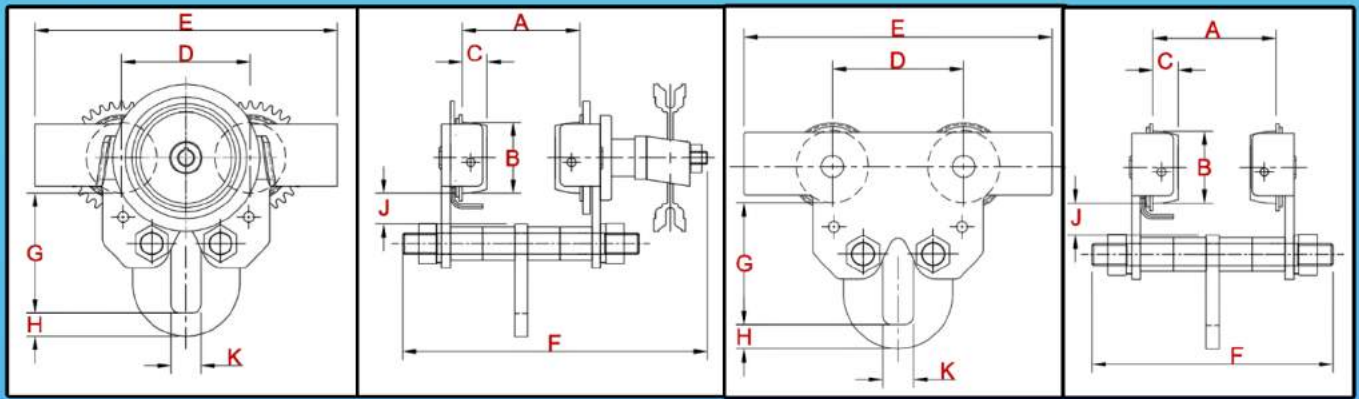


T/T With Flange Guide Rollers



Stainless Steel T/T





GEARED TROLLEY

PUSH-PULL TROLLEY

SPECIFICATIONS/DIMENSIONS (MM)							
GEARED TRAVELLING TROLLEY/PUSH-PULL TRAVELLING TROLLEY (T/T)							
		0.5T	1T	2T/3T	5T	7.5T/10T	15T/20T
Inside of Wheel Flanges(A)	Range 01	58-160	58-160	90-190			
	Range 02	160-210	160-210	190-220			
	Range 03	210-305	210-305	220-305	110-220	140-210	180-220
	Range 04				220-305	210-305	220-350
Wheel Tread Diameter(B)		Ø66	Ø66	Ø90	Ø126	Ø140	Ø265
Wheel Tread Width(C)		23	23	28	39	50	50
Centre Distance of Wheels(D)		120	120	155	200	224	365
Overall Length(E)		285	285	350	440	500	780
Overall Width (Max) (Geared Trolley)(F)	Range 01	340	340	380			
	Range 02	400	400	505			
	Range 03	505	505	560	500	500	600
	Range 04				580	600	730
Overall Width (Max) (Push-Pull Trolley)(F)	Range 01	265	265	310			
	Range 02	325	325	430			
	Range 03	430	430	485			
	Range 04						
Headroom(G)		90	90	145	150	190	375
Depth of Suspension plate in mm(H)		22	22	30	34	48	75
Underside of wheel to Suspension Plate(J)		29	29	31	35	50	45
Width of Suspension Slot in mm (K)		30	30	50	65	97	180
Min. radius of track curve in mm		1300	1300	1300	1300	1300	1300
Bare Weight in KG		12	12	24	80	120	260

Data Tolerance ±10%



Geared T/T



Push-Pull T/T



Non-Spark T/T



T/T With Flange Guide Rollers



Stainless Steel T/T